

## Mileage Accumulation Chassis Dyno Lab (Powertarin)

Train MACD lab is the part of Powertrain Lab. The chassis dynamometer is design for transient testing requirement. The dyno is used for emission and mileage testing. They are equipped with rollers and motor, which is position between the rollers.

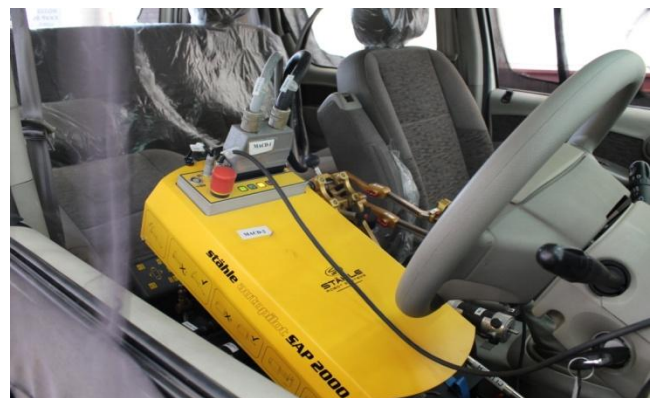


## Mileage Accumulation Chassis Dyno

### **1. Use of Facility:**

The system is used in following tests.

- Performance and endurance mileage accumulation test.
- Functional test and lifetime tests on vehicles and components (Fuel system, cooling system, heating / air-



conditioning system etc.)

- Exhaust emission testing.
- Environmental tests (low/high temperature test in a climatic chamber).
- Fuel consumption test, injection fine tuning.
- Exhaust and catalyst tuning.
- NVH test.

## 2. Technical Detail

Lab	Specification		
	Dyno	Fuel	Drive
Mileage Accumulation Chassis Dyno	55	Gasoline + Diesel + CNG	2x3
	250	Gasoline + Diesel + CNG	4x4
	250	Gasoline + Diesel + CNG	4x4